



Air



- Boilers ? Generators ? Vehicles and equipment ? Furnaces, incinerators ? Welding and soldering ?
- On-site burning ? Use of solvents ? Use of fumigation ? Evaporation of chemicals ? Refrigeration plant (escape of refrigerant gas) ?
- Is exhaust ventilation used ?



Sample questions for identifying environmental aspects and impacts



Land



- Unmade ground or laid to hard standing ? Is hard standing permeable ?
- Any history of contamination ? Discharges of liquid waste across ground ? Potential for leakage, spillage, or escape of pollutants into the ground ? Are vehicles or machinery parked on unprotected ground ?
- Are fuels or other chemicals stored on unprotected ground ? Any burial of waste ? e.g. pollutants – oils, pesticides, herbicides, fertilisers, treatments, solid waste.



Waste



- Where is waste generated ? And in what sort of quantities ? Where are skips located ? And what sort and size are they ? Are there any hazardous wastes (special waste) – e.g. waste oils, pesticide washings, solvents, clinical waste, asbestos ? Is there any recycling of waste materials ? *Note any segregation bins.* Are waste skips covered and/or sealed ? Are waste skips likely to leak polluting liquids (e.g. compactors can leak hydraulic fluids) ? How is waste transported, handled, and removed from site ?



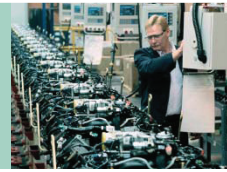
Hazardous chemicals & fuels



- What storage facilities exist ? Are these banded or protected against leaks, spills or collisions ? Is spill containment and clean up equipment provided (e.g. spill kits, booms, mats) ? Can stop valves be easily located (for tanks and supply lines) ? Are storage areas secured against theft or vandalism ? Are storage areas exposed to the elements ? Are there any signs of corrosion on containers or tanks ?
- If bunds exist, are they impermeable ? Are there any obvious signs of leaks, spills or escapes ? Where would any leaks, spills or escapes go – e.g. nearby ground, surface drains ? Are deliveries supervised ? How are chemicals or fuel handled ?



Nuisance



- Do operations create excessive :
- Dust ? Noise ? Odours ?
 - Fumes ? Light ? Vibration ?
 - Traffic congestion or obstructions ?



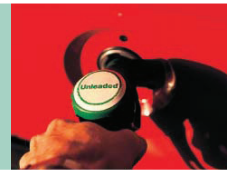
Flora/Fauna & archaeology



- Protected trees ? Protected species ? Designated heritage sites, conservation areas, or sites of special scientific interest ? Hedgerows ?
- Breeding grounds ? Other noteworthy animal or plant life ?
- Archaeological remains on site ?



Resource consumption



- Materials, components ? Packaging ? Cleaning products, and ancillary products ? Tools and equipment ?
- Energy – petrol, diesel, electricity, gas, solid fuels ? Compressed air, steam ?
- Water – hot water is often heated by energy bought in ?



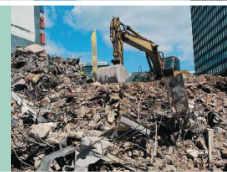
Water



- Drains and grates – surface water – where do they go ? Are oil interceptors fitted ? Separation pots, tanks, or filters ? Reed beds – what checks are done ? Cut-off valves ?
- Foul sewers – where do they run ? Inspection cover locations ? Septic tanks – how often are they pumped ?
- Water treatment units – where do they discharge to ? What checks are done ? Cleaning operations ? Spraying operations ? De-watering – pumping out water ? Abstraction of water from water bodies or bore holes ? Nearby water bodies – rivers, streams ditches, ponds, lakes, underground aquifers, sea ? *Note : think also of water as a resource – it costs.*



Planning



- Listed buildings ? New structures ? Change of use of existing structures ?



Other useful information



- Complaints from neighbours or communities ? Previous environmental accidents or incidents ? Previous prosecutions or warnings ? Flooding incidents ? Prevailing wind direction ?